

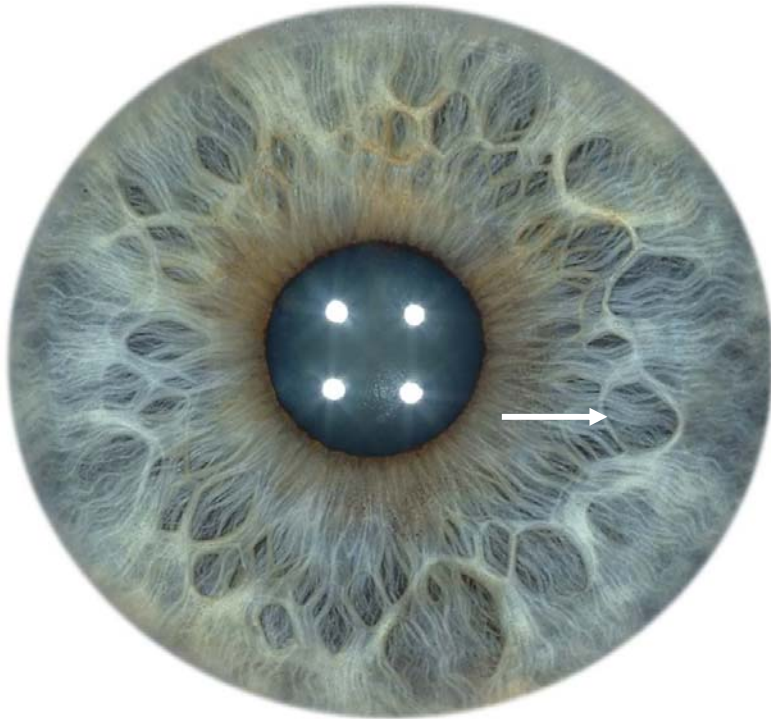
# *Bridging* the Gap<sup>©</sup>

Behavioural & Physical Iridology  
Correspondence Course

by

*Jim Verghis*

# Behavioural Model: Emotional Type - Lacunae



## *Inherent qualities*

Right Brain

Extroverted

Creative

Auditory Intake

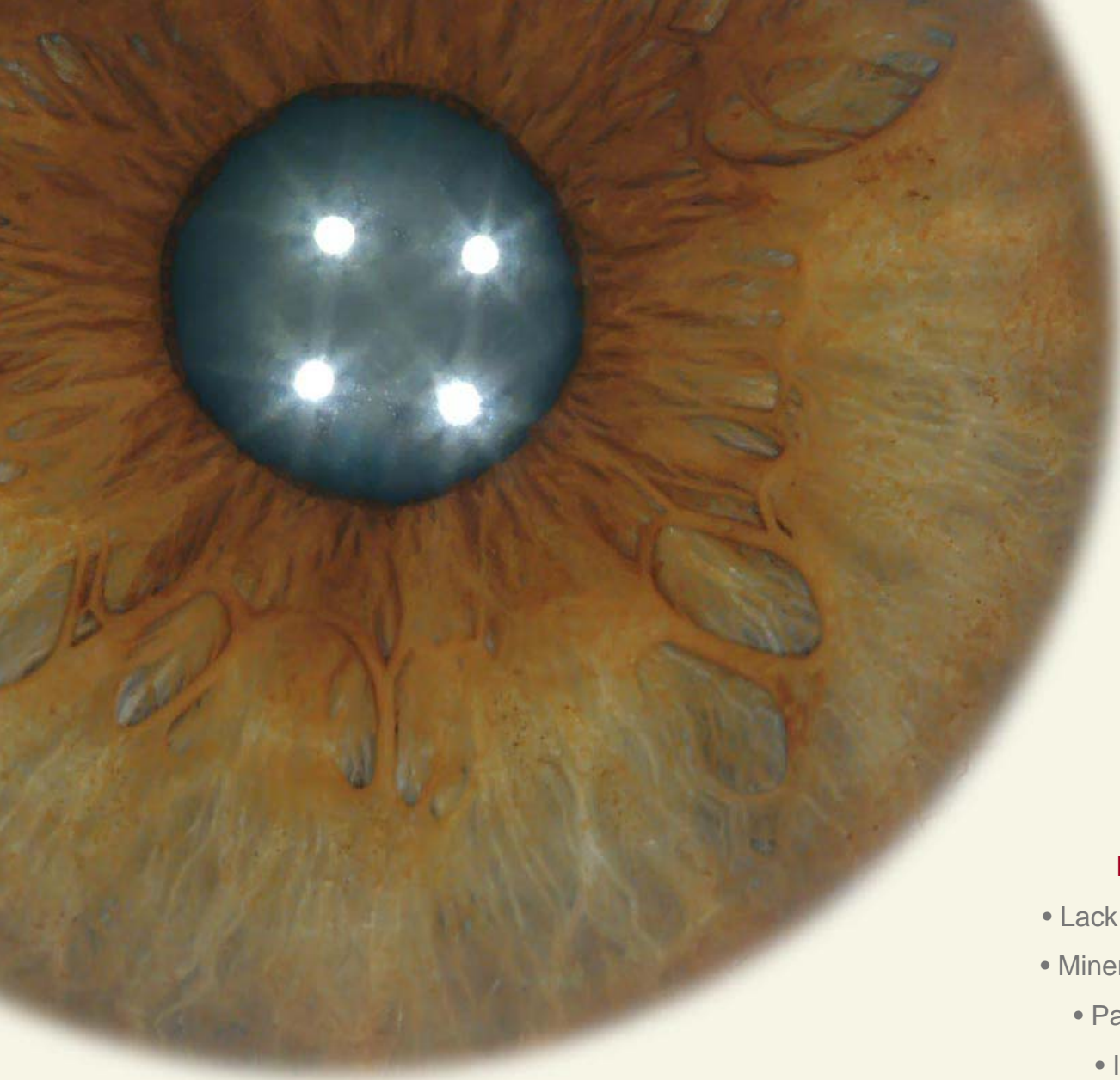
Visually Expressive

*Quality: Outgoing, Ideas, Spontaneous, Passionate*

*Imbalance: Blaming, Angry, Depressed, Sad, Impatient*

*Lesson: Plan, Clarity, Responsible, Certainty, Patience*

*Gift: Peace, Joy, Warmth, Harmony*



## Mixed Biliary

Hazel / Green Eye

### Physical Model:

- Lack of digestive enzymes
- Mineral assimilation issues
  - Pancreatic weakness
  - Intestinal Bloating
- Sensitivity of liver & gall-bladder



## I.P.B

**Physical Model:** The IPB or Inner Pupillary Border is often referred to as the Pupillary Ruff. This ring requires good magnification and lighting to be properly observed.

This orange / red protuberance is unique in being the only place where nervous system tissue is visible externally, the Ruff is an extension of the optic nerve.

Larger undulations and notable variances are seen to have a reflexive association with the area adjacent in the surrounding iris (see Iris Positions Chart).

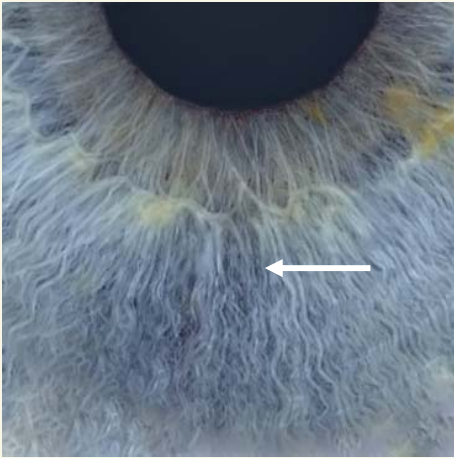
Click the speaker icon for behavioural interpretation



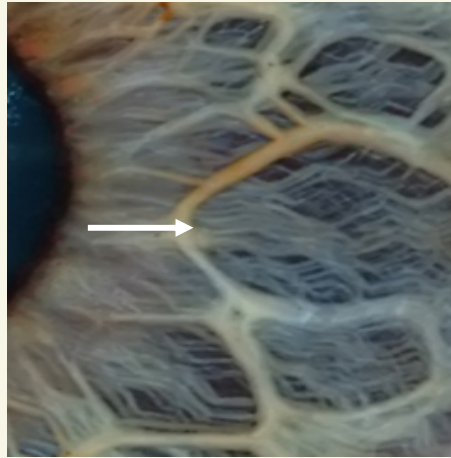
Audio File

Title Page

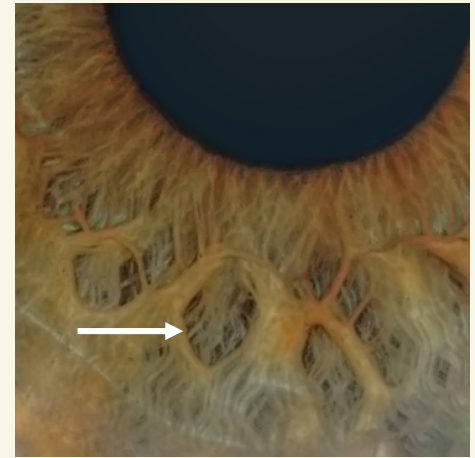
# Types of Lacunae



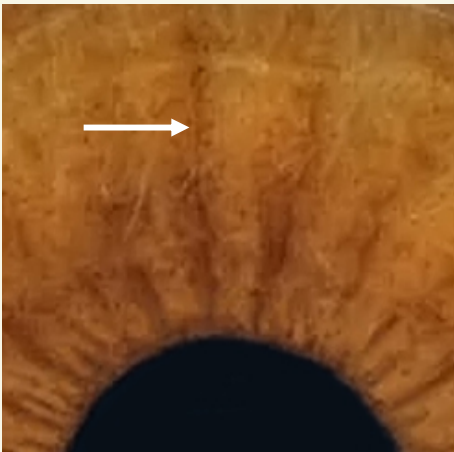
Rarefaction



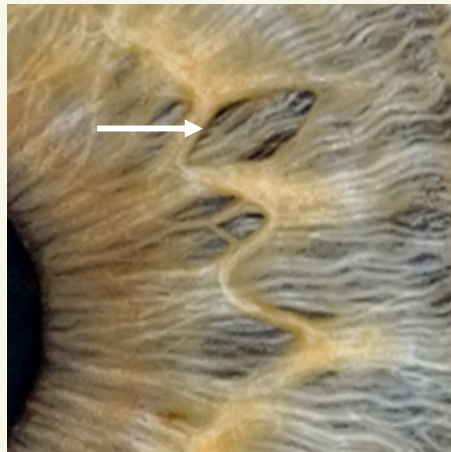
Giant



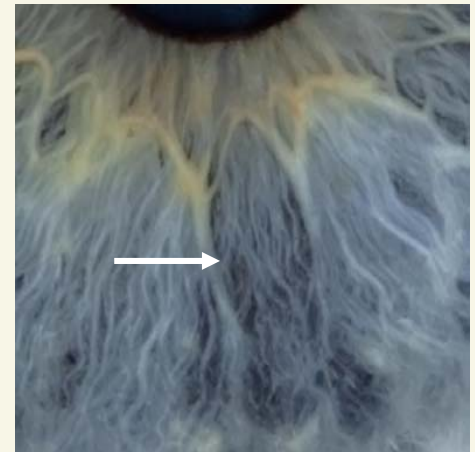
Leaf



Radial Spokes



Rhomboid



Open



1. Psora in Rivalry
2. Introverted ANW

## Connective Tissue Sensitive

**Physical Model:** Loose, open and wavy fibres define this structures appearance.

Connective tissue in the limbs can become easily stressed or subject to tears and strains. The deeper connective tissues that support the internal organs are also areas of potential weakness.

Common complaints are hernia, haemorrhoids and prolapsed colon.

Generally there tends to be a lower level of physical endurance.

Having a looseness and flexibility in structure they often excel in gymnastics during their youth.

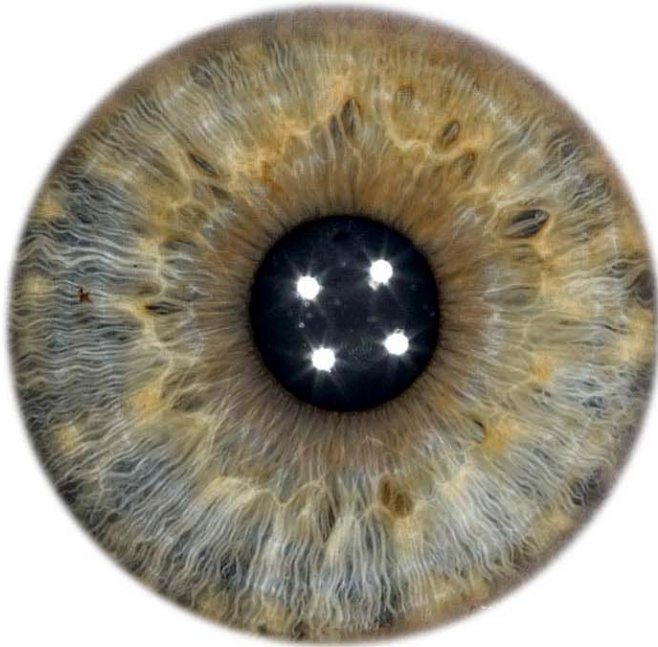
Click the speaker icon for behavioural interpretation



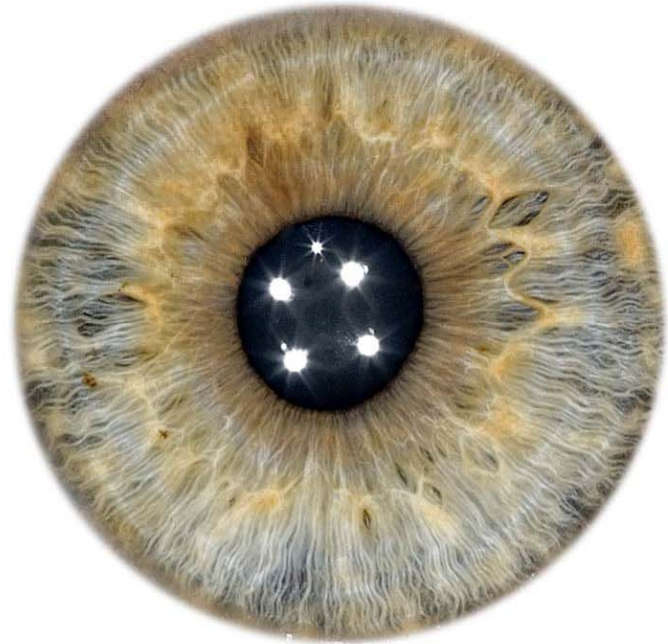
Audio File

Title Page

## Practice Pair 2



Right Eye



Left Eye

Reveal

*Before clicking the Reveal button, make some detailed notes about the current iris slide.*

Title Page